

Teaching for Success

Continuing Professional Development - Framework



On teaching:...

“Our job seems to require the sort of skills one would need to pilot a bus full of live chickens backwards, with no brakes, down a rocky road through the Andes while simultaneously providing colorful and informative commentary on the scenery.”

Teaching Competencies

Teaching competences are complex combinations of knowledge, skills, understanding, values and attitudes, leading to effective action in situation. **Teaching is much more than a task**, and involves values or assumptions concerning education, learning and society.

What is the British Council's Continuing Professional Development Framework?

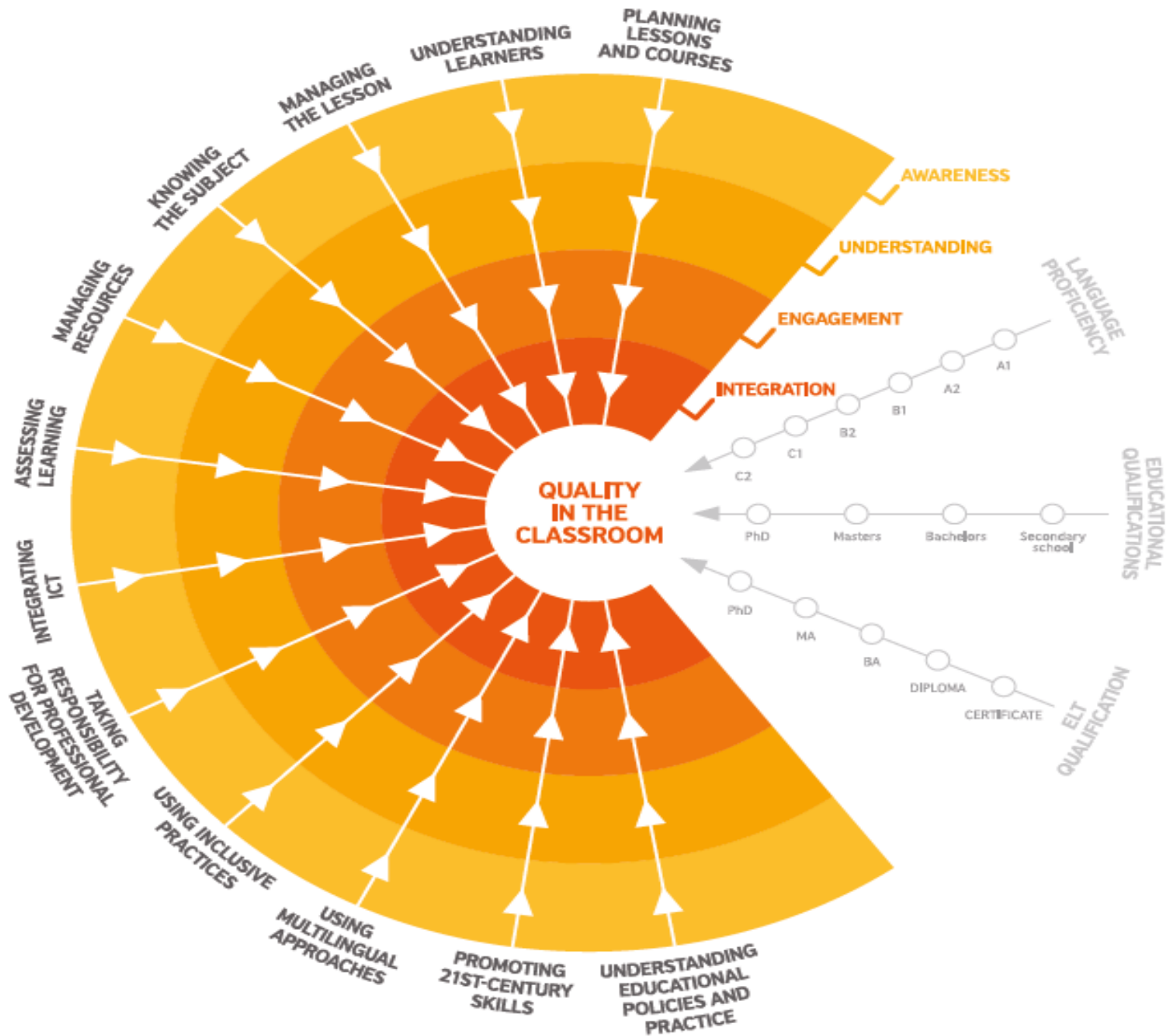
- The Continuing Professional Development (CPD) Framework helps you assess your stage of development in different areas of teaching and identify the development pathway to meet your needs at different stages.

Types of professional development

CPD framework has a holistic approach to teacher development. It encourages, validates and assesses 4 types of formal and informal learning and development:

- Training
- Use of teacher resources
- Networking
- Reflective practice

How can you establish your development stage in different areas? How can you design your own development pathway?



Step one

Look at the list of 12 professional practices in the Framework:

- Planning lessons and courses
- Understanding learners
- Managing the lesson
- Knowing the subject
- Managing resources
- Assessing learning
- Integrating ICT
- Taking responsibility for professional development
- Using inclusive practices
- Using multilingual approaches
- Promoting 21st century skills
- Understanding educational policies and practice

Step two

To map your teacher competence onto the framework, colour in the arrows for each professional practice at the appropriate level.

Awareness: you have heard of the professional practice.

Understanding: you know what the professional practice means and why it's important.

Engagement: you demonstrate competency in this professional practice at work.

Integration: you demonstrate a high level of competency in this professional practice and it consistently informs what you do at work.

Step three

In relation to your own teaching context, think about the **areas you want to develop.**

What are most important for you? What are your development priorities?

Step four

Think about what activity would help you to address this priority.

e.g. becoming a member of ELTAM?

Step five

Think about what resources you would need to support yourself.

Step six

Visit: www.teachingenglish.org.uk to find resources for your professional development that meet the needs you have identified.

TeachingEnglish



The teacher development section includes information about our training courses, our CPD framework, publications, research database and many other resources to help with professional development.



Training courses



Continuing professional development



Video tips



Publications



ELT research database



Networks

CPD

- Planning lessons and courses
- Understanding learners
- Managing the lesson
- Knowing the subject
- Managing resources
- Assessing learning
- Integrating ICT
- Taking responsibility for professional development
- Using inclusive practices
- Using multilingual approaches
- Promoting 21st century skills
- Understanding educational policies and practices

The bad news
is **time flies**. The
good news
is **you're the pilot**.